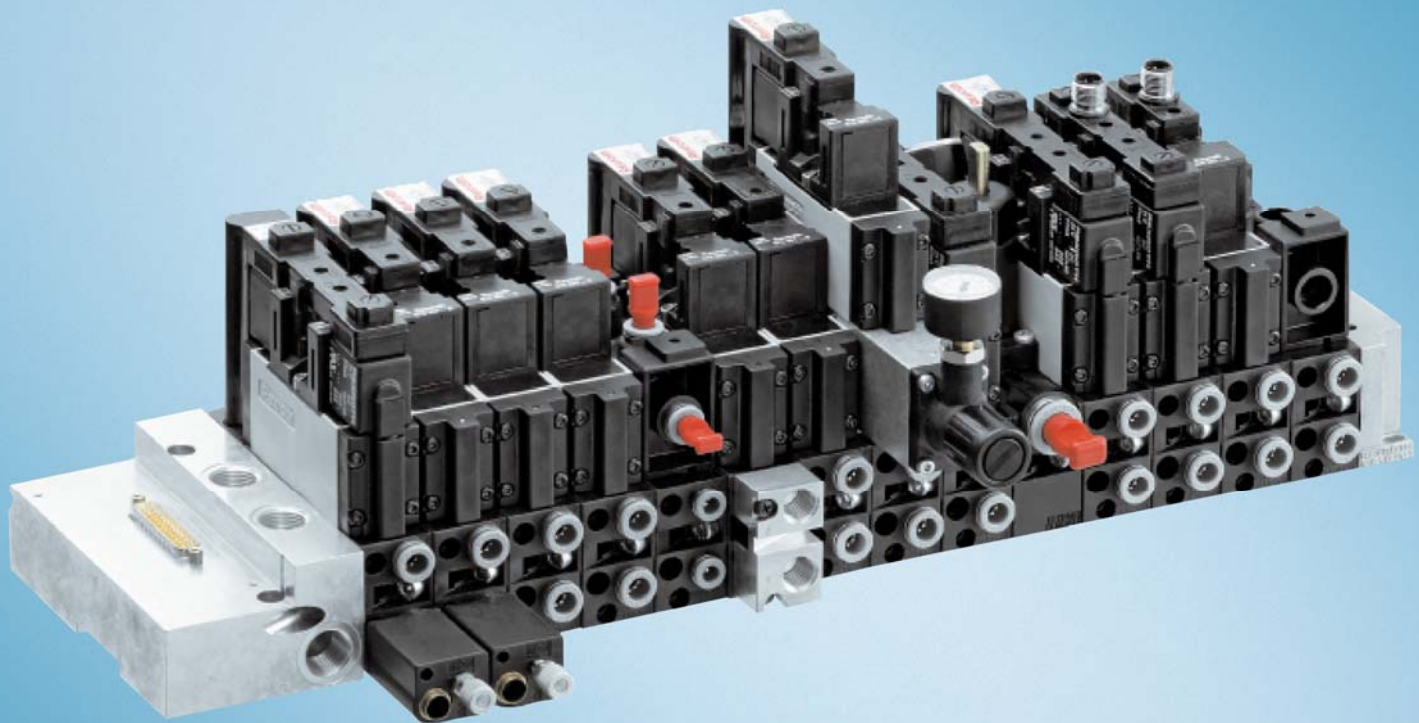


Series CD26-PL Plug-in Pneumatic Directional Control Valves

To ISO 15407-2



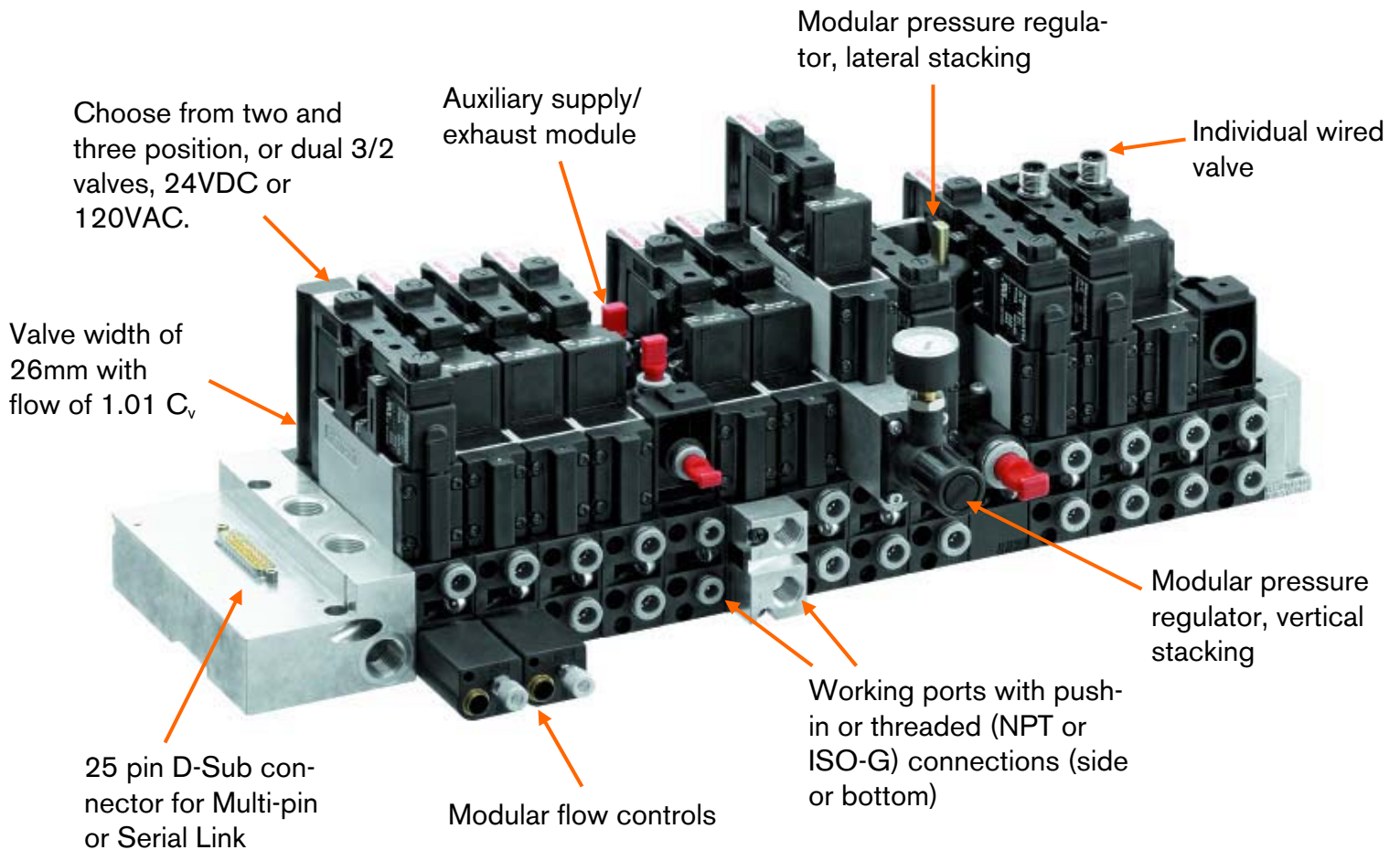
Series CD26-PL Valves

Pneumatic Plug-in Directional Control
valve to ISO 15407-2

Rexroth
Bosch Group

Series CD26-PL valve offers plug-in manifolds or single valves on subbases

The Series CD26-PL modular plug-in valve manifolds can support up to twelve valves plus seven additional stations for accessories such as lateral stacking pressure regulators. Available with NPT or ISO-G (BSPP) ports, the compact CD26-PL is only 26mm wide but offers flows up to 1.01 Cv. Valve functions include two and three positions plus dual 3/2 valves, which save space and expense.



How to Order:

Our on-line configurator allows you to design your own custom, factory-assembled manifold—preventing the selection of impossible configurations, and get a part number and CAD drawing immediately.



<u>Valve Manifolds</u>	Page
Version 30, multi-pin plug (D-Sub, 25 pin, 24VDC)	2
Version 31, multi-pin plug (D-Sub, 25 pin, 120VAC)*	2
Version 36, DDL, S-Design	6
Version 40, BDC, S-Design	11
<i>*For availability of 120VAC, contact factory.</i>	
 <u>Solenoid Valves</u>	
2 x 3/2-way valve.....	15
5/2-way valve	17
5/3-way valve	20
Pressure regulator for multiple valves	22
Pressure regulator for one valve, port 1	23
Pressure regulator for one valve, ports 2 & 4	24
Accessories	25
 BDC (Bus Direct Control) information	38
DDL (Drive and Diagnostic Link) information	39
Rexroth plug-in valves overview.....	40

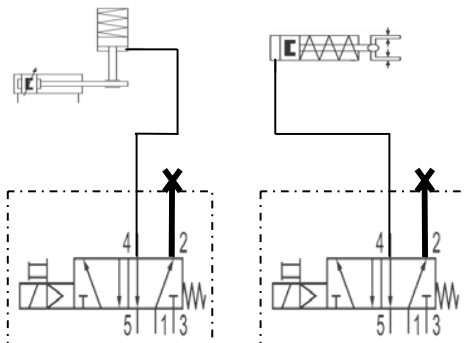
Advantages of using the CD26-PL Dual 3-way valves (2 x 3/2)

-Two independent 3/2 valves in one body

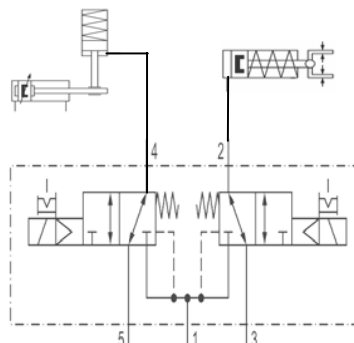
Significantly reduces valve count, cost, manifold foot print, weight, and I/O allocation compared to using the traditional method of two 4-way valves with a port plugged. They can be used with our modular sandwich pressure regulators.

Ideal applications include: conveyor pallet stops, pop-up/locating cylinders, spindles, part present sensing, rod locks, air bags, piloting higher flow valves, single acting clamps, grippers, etc.

Traditional Method:
Two 4-way valves with a port plugged



Dual 3/2 Method:
Independent control in one valve body



Valve terminal system Series CD26-PL



Version 30, multi-pin plug (D-Sub, 25-pin, 24VDC)
Version 31, multi-pin plug (D-Sub, 25-pin, 120VAC)**
★

Rexroth
Bosch Group

Technical Data

Type	Valve terminal system
Standard	ISO 15407-2, 26 mm
Working pressure range	see valves
Nominal flow Q_n	see valves
Ambient temperature range	min./max. -15 °C / +50 °C (+5 °F / +122 °F)
Pressure medium	Compressed air according to DIN ISO 8571-1, 2 3 2
Materials	Body/cover PA, POM, AI
Seals	NBR, Polyurethane
Operating voltage valves	24 V DC $\pm 10\%$ / 110VAC $\pm 10\%$
Power consumption per solenoid	1,6 W
Current per D-Sub connector max.	1 A
Power supply	DIN EN 61558-1 and 61558-2-6
Protection class with bridges	IP65-IEC60529 (DIN VDE 0470-1) (NEMA 4)
Actuated time ED	100%



Application area

Suitable for all applications
Quick pneumatic and electrical valve connection to the base plate
Valve mounting with 2 captive screws
Any orientation position
Wide range of accessories

Valve configuration and direct ordering on the Internet

- Completely assembled and tested valve units with user manual
- D-Sub connector, 25-pin (see below for pin assignment)
- Max. number of valves: 12
- Number of valve positions max.: 19 (incl. lateral regulators and supply modules)
- Pilot control module with LED and protective circuit
- Available with internal or external pilot control
- Expandable with 2 valve positions (optionally selectable in configurator)
- Optional with D-Sub connection cable

Accessories (to be ordered separately)

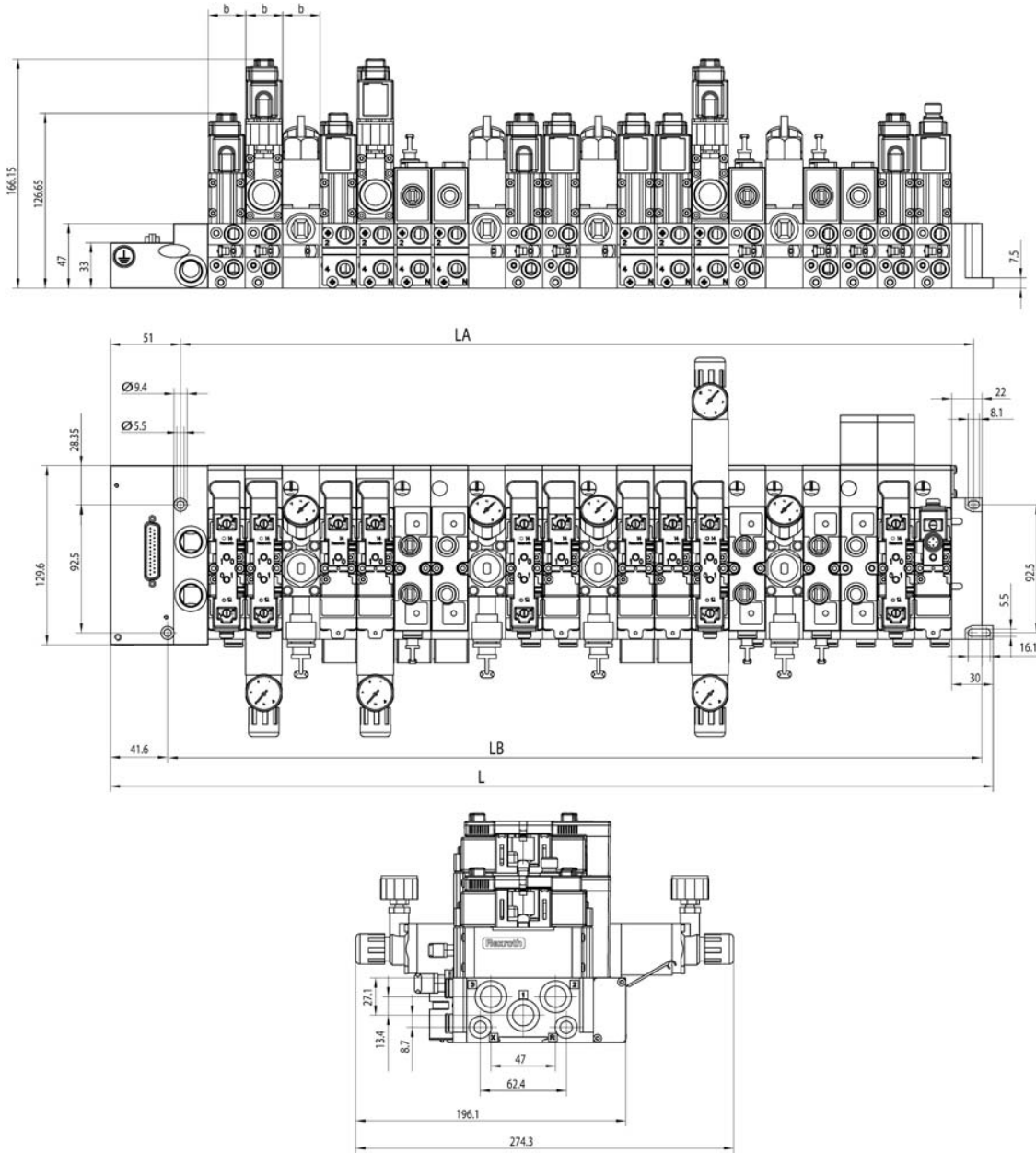
	Accessories	Fig.	Description	Part no.
	D-Sub Socket	1	with cable, 3 m	0493859807
	D-Sub Socket	1	with cable, 10 m	0493845705
	D-Sub Socket	1	with cable, highly flexible, 10 m	8946203902
	Manual*	-	for valve units CD26-PL	R412006891
	Other accessories	-		see valves CD26-PL

* included in scope of delivery for configured units. **For availability of 120VAC, contact factory.
For technical details see on-line catalog

Version 30, multi-pin plug (D-Sub, 25-pin, 24VDC)
Version 31, multi-pin plug (D-Sub, 25-pin, 120VAC)

Rexroth
Bosch Group

Valve unit, max. stage of expansion



Connection 1: Pressure supply (exhaust at dual pressure operation), G3/8 or 3/8" NPTF
 Connection 3 and 5: Exhaust lines (pressure supply at dual pressure operation), G3/8 or 3/8" NPTF
 Connection X: External pilot air supply, G1/8 or 1/8" NPTF
 Connection R: Restricted pilot exhaust, G1/8 or 1/8" NPTF

$L = n * b + 101$
 $LB = n * b + 50$
 $LA = n * b + 36$
 n = number of valve positions
 b = width of valve positions (27.0 - 27.25 mm)

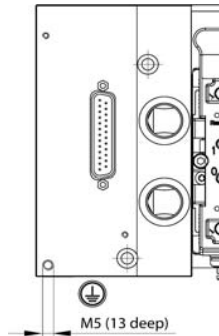
Valve terminal system Series CD26-PL

Version 30, multi-pin plug (D-Sub, 25-pin, 24VDC)

Version 31, multi-pin plug (D-Sub, 25-pin, 120VAC)

Rexroth
Bosch Group

Pin allocation



Allocation scheme multi-pin plug

Valve	Pilot	D-Sub pin	Function
V1	14	1	24 or 120V signal
	12	2	24 or 120V signal
V2	14	3	24 or 120V signal
	12	4	24 or 120 V signal
V3	14	5	24 or 120V signal
	12	6	24 or 120V signal
V4	14	7	24 or 120V signal
	12	8	24 or 120V signal
V5	14	9	24 or 120V signal
	12	10	24 or 120V signal
V6	14	11	24 or 120V signal
	12	12	24 or 120V signal
V7	14	13	24 or 120V signal
	12	14	24 or 120V signal
V8	14	15	24 or 120V signal
	12	16	24 or 120V signal
V9	14	17	24 or 120V signal
	12	18	24 or 120V signal
V10	14	19	24 or 120V signal
	12	20	24 or 120V signal
V11	14	21	24 or 120V signal
	12	22	24 or 120V signal
V12	14	23	24 or 120V signal
	12	24	24 or 120V signal
V1 - V12	14, 12	25	0 V / GND
D-Sub body			FE

Valve terminal system

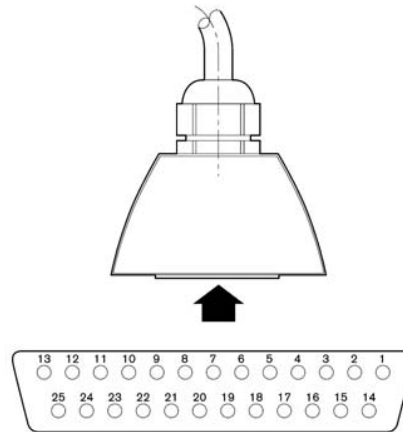
Series CD26-PL

Version 30, multi-pin plug (D-Sub, 25-pin, 24VDC)

Version 31, multi-pin plug (D-Sub, 25-pin, 120VAC)

Rexroth
Bosch Group

Fig. 1 D-Sub connector



00121419

Allocation scheme

Valve position	Solenoid LED	Pin	Wire color
1	14	1	white
	12	2	brown
2	14	3	green
	12	4	yellow
3	14	5	grey
	12	6	pink
4	14	7	blue
	12	8	red
5	14	9	black
	12	10	purple
6	14	11	grey/pink
	12	12	blue/red
7	14	13	white/green
	12	14	brown/green
8	14	15	white/yellow
	12	16	yellow/blue
9	14	17	white/grey
	12	18	grey/brown
10	14	19	white/pink
	12	20	pink/brown
11	14	21	white/blue
	12	22	brown/blue
12	14	23	white/red
	12	24	brown/red
1-12	0 V / GND	25	white/black

Valve terminal system Series CD26-PL

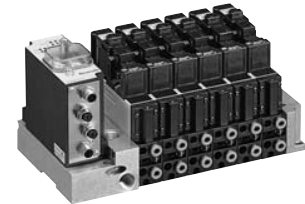
Version 36, DDL, S-Design



Rexroth
Bosch Group

Technical Data

Type	Valve terminal system
Standard	ISO 15407-2, 26 mm
Working pressure range	see valves
Nominal flow Q_n	see valves
Ambient temperature range	min./max. -15 °C / +50 °C (+5 °F / +122 °F)
Pressure medium	Compressed air according to DIN ISO 8571-1, 2 3 2
Materials	Body/cover PA, POM, AI
Seals	NBR, Polyurethane
Operating voltage valves	24 V DC $\pm 10\%$
Power consumption per solenoid	1,6 W
Current per D-Sub connector	max. 1 A
Power supply	DIN EN 61558-1 and 61558-2-6
Protection class with bridges	IP65-IEC60529 (DIN VDE 0470-1) (NEMA 4)
Actuated time ED	100%



Application area

Suitable for all applications.
Quick pneumatic and electrical valve connection to the base plate
Valve mounting with 2 captive screws
Any orientation position
Wide range of accessories

Valve configuration and direct ordering on the Internet

- Completely assembled and tested valve units with user manual
- D-Sub connector, 25-pin (see below for pin assignment)
- Max. number of valves: 12
- Number of valve positions max.: 19 (including pressure regulator and 1/3/5- modules)
- Pilot control module with LED and protective circuit
- Available with internal or external pilot control
- Expandable with 2 valve positions (optionally selectable in configurator)
- Diagnostic capability
- Optionally with DDL S-design bus module, directly mounted, or with DDL valve driver for connection to DDL stand-alone bus module, with or without external power supply

Accessories (to be ordered separately)

	Accessories	Fig.	Description	Part no.
	DDL Module	1	Bus box ControlNet (incl. valve driver)	3375000560
	DDL Module	2	Bus box DeviceNet (incl. valve driver)	3375000370
	DDL Module	3	Bus box Interbus S (incl. valve driver)	3375000460
	DDL Module	4	Bus box Profibus DP (incl. valve driver)	3375000260
	DDL Module	5	Bus box Ethernet I/P (incl. valve driver)	R412000732
	DDL Module	6	Valvedriver	3375000050
	DDL Module	6	Valve driver with external power supply	3375000150
	Manual*	-	for valve units CD26-PL	R412006891
	Other accessories	-		see valves CD26-PL

* included in scope of delivery for configured units
For technical details see on-line catalog

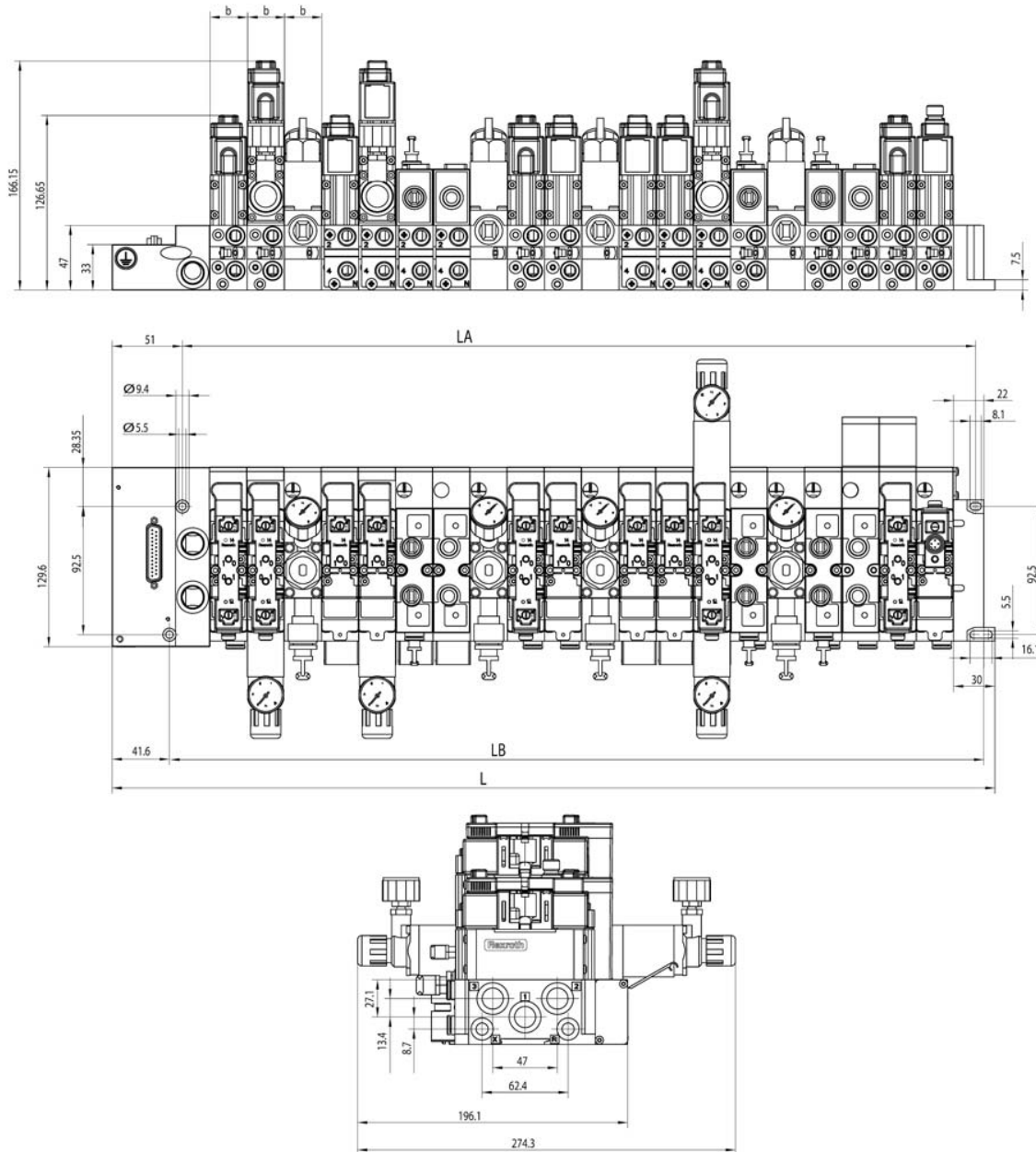
Valve terminal system

Series CD26-PL

Version 36, DDL, S-Design

Rexroth
Bosch Group

Valve unit, max. stage of expansion



Connection 1: Pressure supply (exhaust at dual pressure operation), G3/8 or 3/8" NPTF
 Connection 3 and 5: Exhaust lines (pressure supply at dual pressure operation), G3/8 or 3/8" NPTF
 Connection X: External pilot air supply, G1/8 or 1/8" NPTF
 Connection R: Restricted pilot exhaust, G1/8 or 1/8" NPTF

$L = n * b + 101$
 $LB = n * b + 50$
 $LA = n * b + 36$
 n = number of valve positions
 b = width of valve positions (27.0 - 27.25 mm)

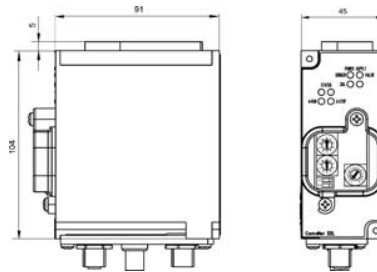
Valve terminal system

Series CD26-PL

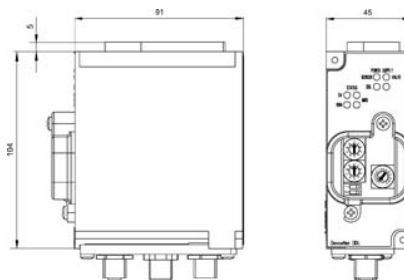
Version 36, DDL, S-Design

Rexroth
Bosch Group

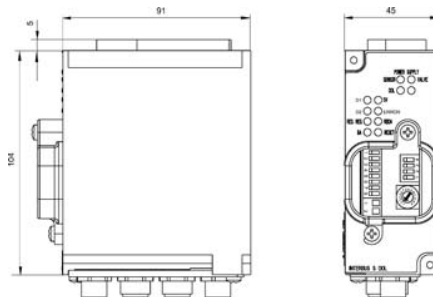
DDL Module 3375000560, ControlNet (Fig. 1)



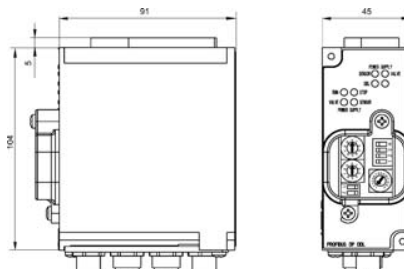
DDL Module 3375000370, DeviceNet (Fig. 2)



DDL Module 3375000460, Interbus S (Fig. 3)



DDL Module 3375000260, Profibus DP (Fig. 4)



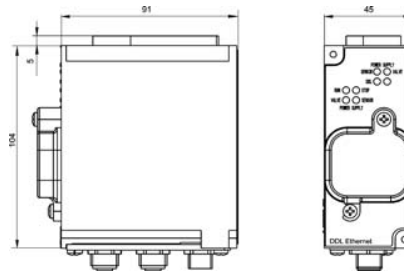
Valve terminal system

Series CD26-PL

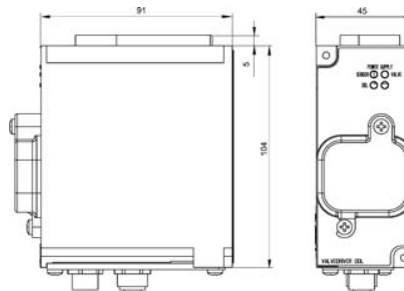
Version 36, DDL, S-Design

Rexroth
Bosch Group

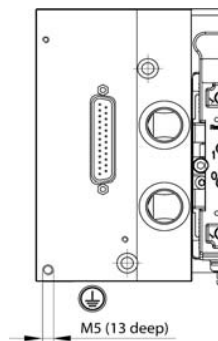
DDL Module R412000732, Ethernet I/P (Fig. 5)



DDL Module 3375000050 / 3375000150 (Fig. 6)



Allocation scheme Multi-pin plug



Valve terminal system

Series CD26-PL

Version 36, DDL, S-Design

Rexroth
Bosch Group

Allocation scheme Multi-pin plug

Valve	Pilot	D-Sub Pin	Function
V1	14	1	24 V signal
	12	2	24 V signal
V2	14	3	24 V signal
	12	4	24 V signal
V3	14	5	24 V signal
	12	6	24 V signal
V4	14	7	24 V signal
	12	8	24 V signal
V5	14	9	24 V signal
	12	10	24 V signal
V6	14	11	24 V signal
	12	12	24 V signal
V7	14	13	24 V signal
	12	14	24 V signal
V8	14	15	24 V signal
	12	16	24 V signal
V9	14	17	24 V signal
	12	18	24 V signal
V10	14	19	24 V signal
	12	20	24 V signal
V11	14	21	24 V signal
	12	22	24 V signal
V12	14	23	24 V signal
	12	24	24 V signal
V1 - V12	14, 12	25	0 V / GND
D-Sub body			FE

Valve terminal system Series CD26-PL

Version 40, BDC, S-Design



Rexroth
Bosch Group

Technical Data

Type	Valve terminal system
Standard	ISO 15407-2, 26 mm
Working pressure range	see valves
Nominal flow Q_n	see valves
Ambient temperature range	min./max. -15 °C / +50 °C (+5 °F / +122 °F)
Pressure medium	Compressed air according to DIN ISO 8571-1, 2 3 2
Materials	Body/cover PA, POM, AI
Seals	NBR, Polyurethane
Operating voltage valves	24 V DC $\pm 10\%$
Power consumption per solenoid	1,6 W
Current per D-Sub connector	max. 1 A
Power supply	DIN EN 61558-1 and 61558-2-6
Protection class with bridges	IP65-IEC60529 (DIN VDE 0470-1) (NEMA 4)
Actuated time ED	100%



Application area

Suitable for all applications.
Quick pneumatic and electrical valve connection to the base plate
Valve mounting with 2 captive screws
Any orientation position
Wide range of accessories

Valve configuration and direct ordering on the Internet

- Completely assembled and tested valve units with user manual
- D-Sub connector, 25-pin (see below for pin assignment)
- Max. number of valves: 12
- Number of valve positions max.: 19 (including pressure regulators)
- Pilot control module with LED and protective circuit
- Available with internal or external pilot control
- Expandable with 2 valve positions (optionally selectable in configurator)
- Optionally with BDC S-design bus module, with or without external power supply

Accessories (to be ordered separately)

	Accessories	Fig.	Description	Part no.
	BDC Module	1	Bus box CANOpen	3375000300
	BDC Module	1	Bus box DeviceNet	3375000350
	BDC Module	2	Profibus DP bus module, supply connection M18, data connector M12	3375000200
	BDC Module	2	Profibus DP bus module, supply connection 7/8", data connector M12	3375000210
	BDC Module	2	Profibus DP bus module, supply connection M18, data connector D-Sub	3375000220
	Manual*	-	for valve units CD26-PL	R412006891
	Other accessories	-		see valves CD26-PL

* included in scope of delivery for configured units
For technical details see on-line catalog

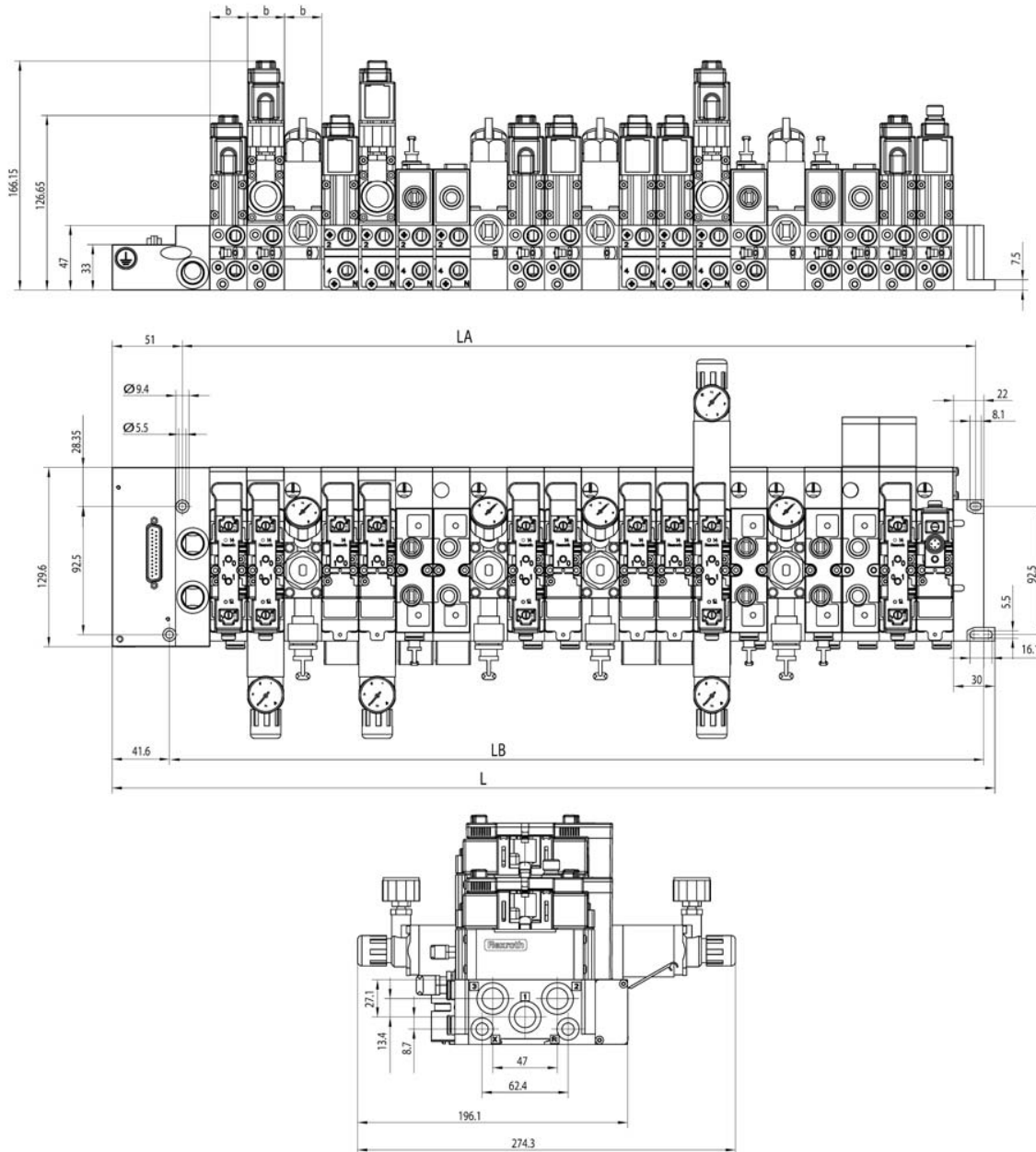
Valve terminal system

Series CD26-PL

Version 40, BDC, S-Design

Rexroth
Bosch Group

Valve unit, max. stage of expansion



Connection 1: Pressure supply (exhaust at dual pressure operation), G3/8 or 3/8" NPTF
 Connection 3 and 5: Exhaust lines (pressure supply at dual pressure operation), G3/8 or 3/8" NPTF
 Connection X: External pilot air supply, G1/8 or 1/8" NPTF
 Connection R: Restricted pilot exhaust, G1/8 or 1/8" NPTF

$L = n * b + 101$
 $LB = n * b + 50$
 $LA = n * b + 36$
 n = number of valve positions
 b = width of valve positions (27.0 - 27.25 mm)

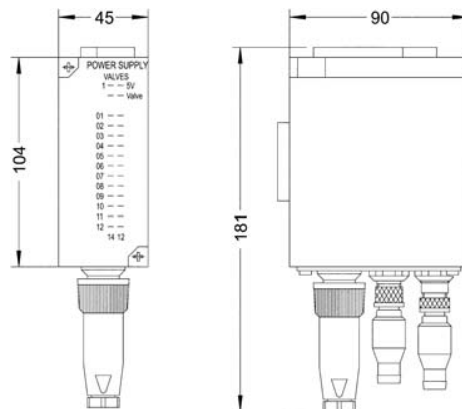
Valve terminal system

Series CD26-PL

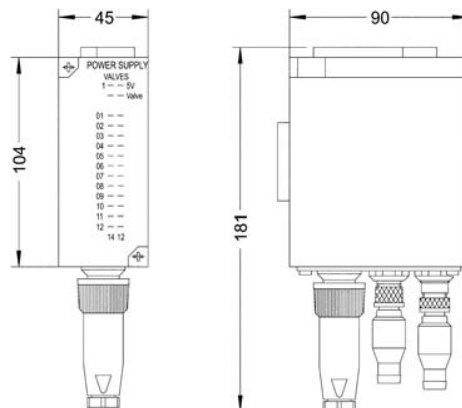
Version 40, BDC, S-Design

Rexroth
Bosch Group

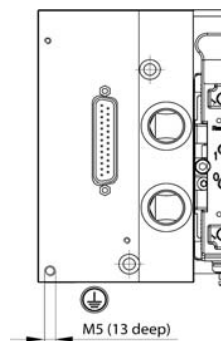
BDC Module 3375000300 and 3375000350, CANOpen and DeviceNet (Fig. 1)



BDC Module 3375000200 to 0220, Profibus DP (Fig. 2)



Allocation scheme Multi-pin plug valve unit



Valve terminal system

Series CD26-PL

Version 40, BDC, S-Design

Rexroth
Bosch Group

Allocation scheme Multi-pin plug valve unit

Valve	Pilot	D-Sub	Function
V1	14	1	24 V signal
	12	2	24 V signal
V2	14	3	24 V signal
	12	4	24 V signal
V3	14	5	24 V signal
	12	6	24 V signal
V4	14	7	24 V signal
	12	8	24 V signal
V5	14	9	24 V signal
	12	10	24 V signal
V6	14	11	24 V signal
	12	12	24 V signal
V7	14	13	24 V signal
	12	14	24 V signal
V8	14	15	24 V signal
	12	16	24 V signal
V9	14	17	24 V signal
	12	18	24 V signal
V10	14	19	24 V signal
	12	20	24 V signal
V11	14	21	24 V signal
	12	22	24 V signal
V12	14	23	24 V signal
	12	24	24 V signal
V1 - V12	14, 12	25	0 V / GND
D-Sub body			FE

Solenoid valves, Series CD26-PL ISO 15407-2



2 x 3/2-way valve, solenoid operated, for subplate mounting

Rexroth
Bosch Group

Technical Data

Type	Spool valve
Standard	ISO 15407-2, 26 mm
Working pressure	see table
Nominal flow rate	Q_n
at 6 bar (87 psi), $\Delta p = 1$ bar (15 psi)	1010 l/min (1.01 C _v)
Ambient temperature range	min./max. -15 °C / +50 °C (+5 °F / +122 °F)
Medium	Compressed air according to DIN ISO 8571-1, 2-3-2
Weight	0.300 kg (0.661 lbs)
Materials	Body PA, POM Seals NBR, Polyurethane
Operating voltages	24 V DC $\pm 10\%$ / 110 V AC $\pm 10\%$
Power consumption	1.6 W
Current consumption	max. 0.5 A
Power supply	DIN EN 61558-1, 2-6
Protection with contact bridge	IP 65-IEC60529 (DIN VDE 0470-1) (NEMA 4)
Duty cycle	100%
Switching times	t_F fill 30 ms t_E exhaust 40 ms



Technical information

Width of valve 26 mm, any installation position
Single connection or assembled into blocks on base plate
Pilot exhaust air collected in case of assembly on base plates.
The valve is non-overlapping
Captive screws and seals

Part no.

Symbol	Voltage	Pilot	Working pressure range [bar] (psi)	Part no.	
				Press non-locking	Turn locking
	24 V DC 120 VAC	internal	2.5 to 10 (36 to 145)	5763990120 5763995170	5763990820 5763995870
	24 V DC 120 VAC	internal	2.5 to 10 (36 to 145)	5763950120 5763955170	5763950820 5763955870
	24 V DC 120 VAC	internal	2.5 to 10 (36 to 145)	5763970120 5763975170	5763970820 5763975870
	24 V DC 120 VAC	external	-0.95 to 10* (14 to 145)	5763960120 5763965170	5763960820 5763965870

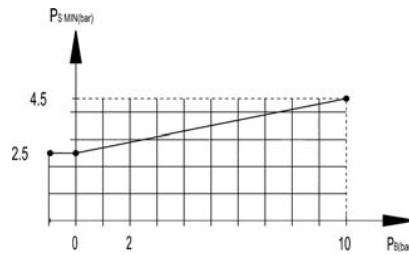
*) min. control pressure see diagram below

Solenoid valves, Series CD26-PL ISO 15407-2

2 x 3/2-way valve, solenoid operated, for subplate mounting

Rexroth
Bosch Group

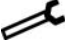

Minimum pilot pressure depending on working pressure



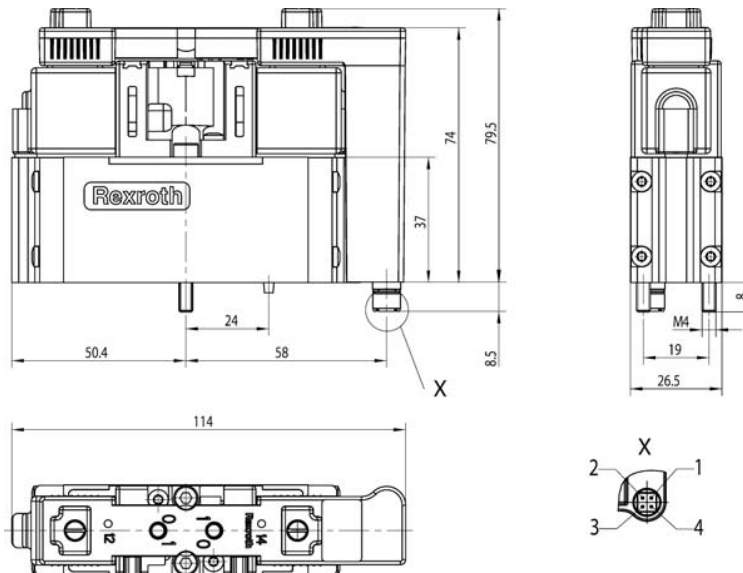
Working pressure: min. -0.95 (14 psi), max. 10 bar (145 psi)

Control pressure: min. see diagram, max. 10 bar (145 psi)

▲ Accessories (to be ordered separately)

	Type	Part no.
	Endplate right, G3/8 Endplate right NPTF, 3/8 " Intermediate plates with cable conduit Single subplate, G1/4 Single subplate, NPTF 1/4 "	8985121012 8985121312 see product overview R412005886 R412005887
	Spare parts kit	5763520002
	Contact bridge, single, 24 V DC Contact bridge, double, 24 V DC Valves without contact bridge Protecting cap for manual override (10 pieces/bag)	R412005847 R412005846 see product overview CD01 8980122904

Valve



Pin allocation: 1) Solenoid 14 2) Solenoid 12 3) Ground 4) 0 V

Solenoid valves, Series CD26-PL

ISO 15407-2



5/2-way valve, solenoid operated, for subplate mounting

Rexroth
Bosch Group



Technical Data

Type	Spool valve
Standard	ISO 15407-2, 26 mm
Working pressure	see table
Nominal flow rate at 6 bar (87 psi), $\Delta p = 1$ bar (15 psi) Q_n	1010 l/min (1.01 Cv)
Ambient temperature range	min./max. -15 °C / +50 °C (+5 °F / +122 °F)
Medium	Compressed air according to DIN ISO 8571-1, 2-3-2
Weight	0.300 kg (0.661 lbs)
Materials	Body Seals PA, POM NBR, Polyurethane
Operating voltages	24 V DC $\pm 10\%$ / 110 VAC $\pm 10\%$
Power consumption	1.6 W
Current consumption	max. 0.5 A
Power supply	DIN EN 61558 1, 2-6
Protection with contact bridge	IP 65-IEC60529 (DIN VDE 0470-1) (NEMA 4)
Duty cycle	ED 100%
Switching times	t_f fill 22 ms t_E exhaust 22 ms



Technical information

Width of valve 26 mm, any installation position
Single connection or assembled into blocks on base plate
Pilot exhaust air collected in case of assembly on base plates.
The valve is non-overlapping
Captive screws and seals

Part no.

Symbol	Voltage	Pilot	Working pressure range [bar] (psi)	Fig.	Part no.	
					Press non-locking	turn/detent
	24 V DC 120 VAC	internal	3 to 10 (44 to 145)	1	5763510120 5763515170	5763510820 5763515870
	24 V DC 120 VAC	external	-0.95 to 10 (14 to 145)	1	5763600120 5763605170	5763600820 5763605870
	24 V DC 120 VAC	internal	2 to 10 (29 to 145)	2	5763520120 5763525170	5763520820 5763525870
	24 V DC 120 VAC	external	-0.95 to 16 (14 to 232) *)	2	5763650120 5763655170	5763650820 5763655870
	24 V DC 120 VAC	internal **)	2.5 to 10 (36 to 145)	2	5763530120 5763535170	5763530820 5763535870

*) min. control pressure see diagram below

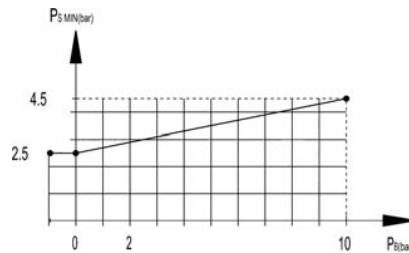
**) with differential piston, signal 14 has priority

Solenoid valves, Series CD26-PL ISO 15407-2

5/2-way valve, solenoid operated, for subplate mounting

Rexroth
Bosch Group

Minimum pilot pressure depending on working pressure



Working pressure: min. -0.95 (14 psi), max. 10 bar (145 psi)

Control pressure: min. see diagram, max. 10 bar (145 psi)

▲ Accessories (to be ordered separately)



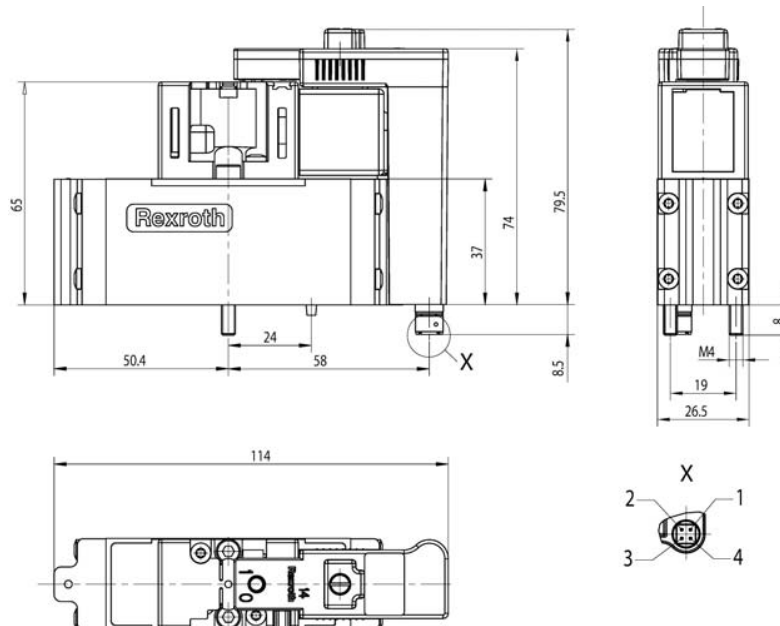
	Type	Part no.
	Endplate right, G3/8 Endplate right NPTF, 3/8 " Intermediate plates with cable conduit Single subplate, G1/4 Single subplate, NPTF 1/4 "	8985121012 8985121312 see product overview R412005886 R412005887
	Spare parts kit	5763520002
	Contact bridge, single, 24 V DC Contact bridge, double, 24 V DC Valves without contact bridge Protecting cap for manual override (10 pieces/bag)	R412005847 R412005846 see product overview CD01 8980122904

Fig. 1, Valve



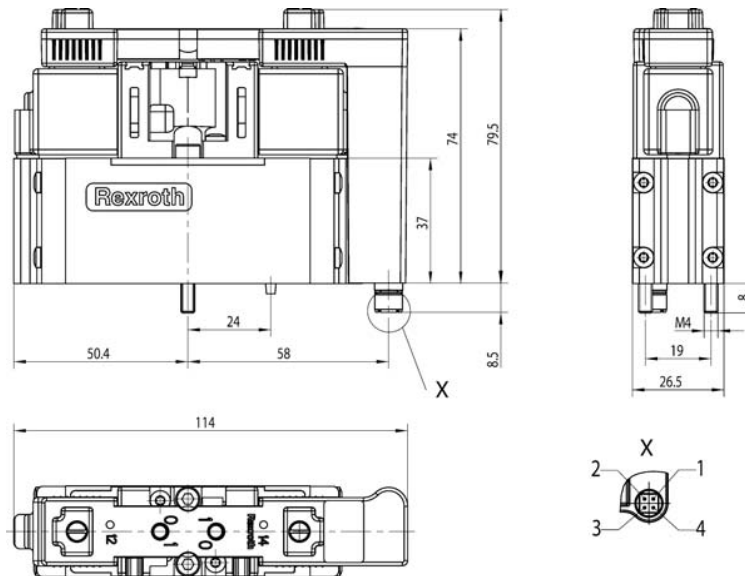
Pin allocation: 1) Solenoid 14 2) Solenoid 12 3) Ground 4) 0 V

Solenoid valves, Series CD26-PL ISO 15407-2

5/2-way valve, solenoid operated, for subplate mounting

Rexroth
Bosch Group

Fig. 2, Valve



Pin allocation: 1) Solenoid 14 2) Solenoid 12 3) Ground 4) 0 V

Solenoid valves, Series CD26-PL ISO 15407-2

5/3-way valve, solenoid operated, for subplate mounting



Rexroth
Bosch Group

Technical Data

Type	Spool valve
Standard	ISO 15407-2, 26 mm
Working pressure	see table
Nominal flow rate at 6 bar (87 psi), $\Delta p = 1$ bar (15 psi) Q_n	650 l/min (0.65 Cv)
Ambient temperature range	min./max. -15 °C / +50 °C (+5 °F / +122 °F)
Medium	Compressed air according to DIN ISO 8571-1, 2-3-2
Weight	0.300 kg (0.661 lbs)
Materials	Body PA, POM Seals NBR, Polyurethane
Operating voltages	24 V DC $\pm 10\%$ / 110 V AC $\pm 10\%$
Power consumption	1.6 W
Current consumption	max. 0.5 A
Power supply	DIN EN 61558-1, 2-6
Protection with contact bridge	IP 65-IEC60529 (DIN VDE 0470-1) (NEMA 4)
Duty cycle	100%
Switching times	t_f fill 30 ms t_E exhaust 40 ms



Technical information

Width of valve 26 mm, any installation position
Single connection or assembled into blocks on base plate
Pilot exhaust air collected in case of assembly on base plates.
The valve is non-overlapping
Captive screws and seals

Part no.

Symbol	Voltage	Pilot	Working pressure range [bar] (psi)	Part no.	
				press non-locking	turn/detent
	24 V DC 120 VAC	internal	3 to 10 (44 to 145)	5763800120 5763805170	5763800820 5763805870
	24 V DC 120 VAC	external	-0.95 to 10 (14 to 145) *)	5763850120 5763855170	5763850820 5763855870
	24 V DC 120 VAC	internal	3 to 10 (44 to 145)	5763810120 5763815170	5763810820 5763815870
	24 V DC 120 VAC	external	-0.95 to 16 (14 to 232) *)	5763860120 5763865170	5763860820 5763865870
	24 V DC 120 VAC	internal	3 to 10 (44 to 145)	5763820120 5763825170	5763820820 5763825870
	24 V DC 120 VAC	external	-0.95 to 16 (14 to 232) *)	5763870120 5763875170	5763870820 5763875870


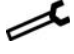

*) pilot pressure range 3-10 bar

Solenoid valves, Series CD26-PL ISO 15407-2

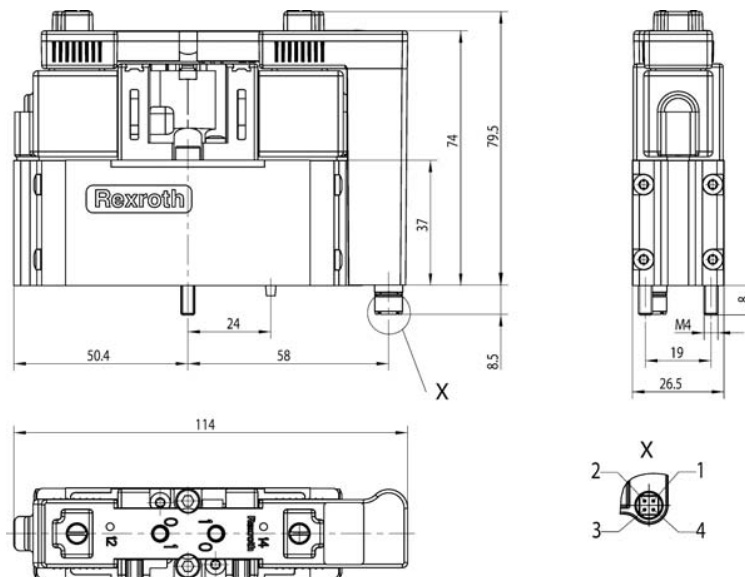
5/3-way valve, solenoid operated, for subplate mounting

Rexroth
Bosch Group

▲ Accessories (to be ordered separately)

	Type	Part no.
	Endplate right, G3/8 "	8985121012
	Endplate right NPTF, 3/8 "	8985121312
	Intermediate plates with cable conduit	see product overview
	Single subplate, G1/4	R412005886
	Single subplate, NPTF 1/4 "	R412005887
	Spare parts kit	5763520002
	Contact bridge, single, 24 V DC	R412005847
	Contact bridge, double, 24 V DC	R412005846
	Valves without contact bridge	see product overview CD01
	Protecting cap for manual override	8980122904
	(10 pieces/bag)	

Valve



Pin allocation: 1) Solenoid 14 2) Solenoid 12 3) Ground 4) 0 V

Solenoid valves, Series CD26-PL

ISO 15407-2

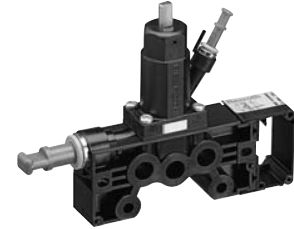
Pressure regulator for multiple valves



Rexroth
Bosch Group

★ Technical Data

Type	Poppet valve with secondary exhaust	
Standard	ISO 15407-2	
Primary pressure	$P_{p \max}$	10 bar (145 psi)
Secondary pressure range	P_s	0.8 to 8 bar (12 to 116 psi)
Nominal flow rate	Q_n	2100 l/min ($P_p > P_s$) (74 SCFM)
at 6 bar (87 psi), $\Delta p = 1$ bar (15 psi)		1900 l/min ($P_{pZ} > P_s$) (67 SCFM)
Ambient temperature range	min./max.	-15 °C / +50 °C (+5 °F / +122 °F)
Medium	Compressed air, lubricated or non-lubricated	
Weight	0.25 kg (0.551 lbs)	
Materials	Body Seals	POM NBR



► Application area

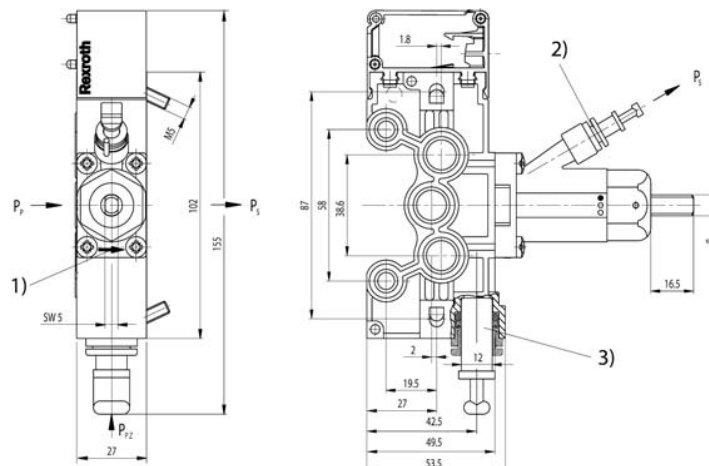
For installation between CD26-PL series intermediate plates according to ISO 15407-2, for pressure regulation of multiple valves.

► ★ Part no.

Symbol	Pilot port	Part no. without gauge
	1	R412005882

▲ ★ Accessories (to be ordered separately)

Symbol	Type	Part no.	Pressure range [bar] (psi)
	Gauge	3530200300	0 to 10 (0 to 145)



1) Flow direction 2) Push-in fitting dia. 6 x 1 (for gauge) 3) Additional pressure feed possible (PUSH-IN fitting Ø 12)
 P_p Primary pressure P_s Secondary pressure gauge port P_{pZ} Additional primary pressure supply

Solenoid valves, Series CD26-PL

ISO 15407-2

Pressure regulator for one valve, port 1



Rexroth
Bosch Group

★ Technical Data

Type		Diaphragm pressure regulator with secondary exhaust
Standard		ISO 15407-2, 26 mm
Primary pressure	$P_{p,max}$	10 bar (145 psi)
Secondary pressure range	P_s	0.8 to 8 bar (12 to 116 psi)
Nominal flow rate	Q_n	
at 6 bar (87 psi), $\Delta p = 1$ bar (15 psi)		940 l/min (33 SCFM) ($P_{pZ} > P_s$)
Ambient temperature range	min./max.	-15 °C / +50 °C (+5 °F / +122 °F)
Medium		Compressed air, lubricated or non-lubricated
Materials	Body Seals	Aluminium NBR



► Application area

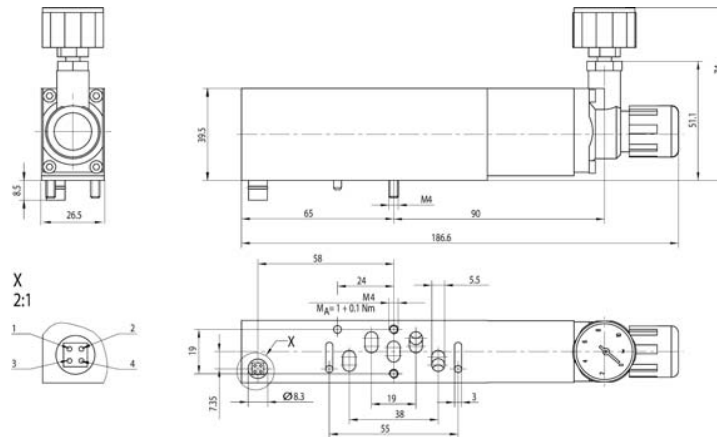
For installation between valve and intermediate plate according to ISO 15407-2

► ★ Part no.

Symbol	Part no. with gauge
	R412005888

▲ ★ Accessories

Symbol	Type	Part no.	Pressure range [bar] (psi)
	Gauge (25 mm Ø)	1827231052	0 to 10 (0 to 145)

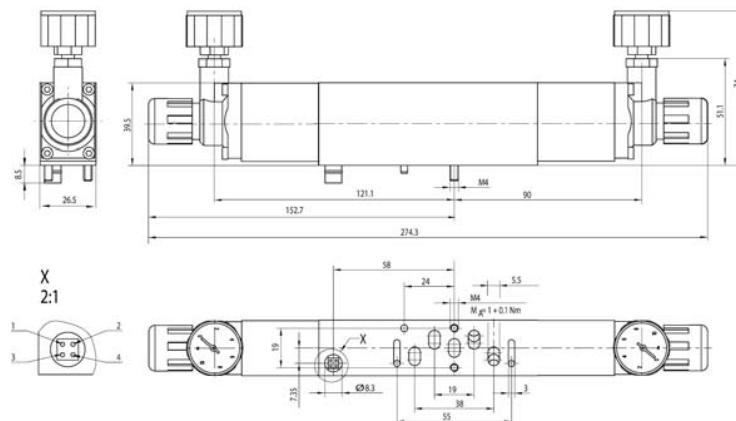


Pin allocation: 1) Solenoid 14 2) Solenoid 12 3) Ground 4) 0 V



Rexroth
Bosch Group

Symbol	Type	Part no.	Pressure range [bar] (psi)
	Gauge (25 mm Ø)	1827231052	0 to 10 (0 to 145)



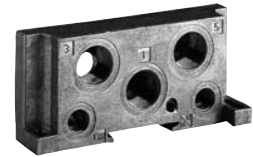
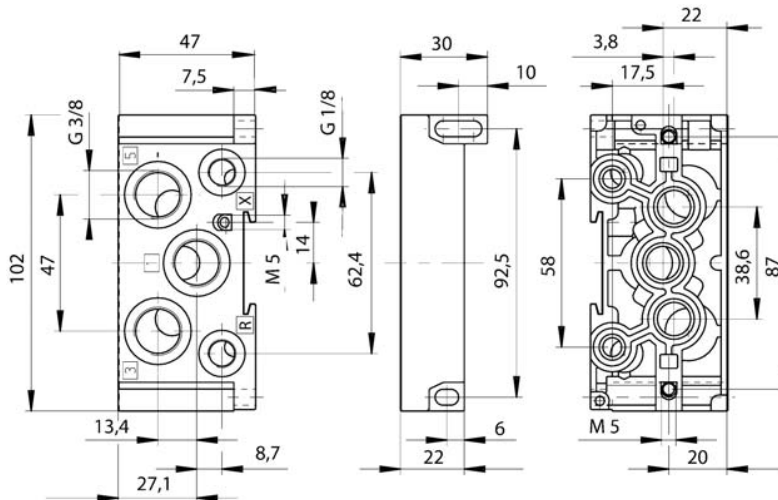
24

Accessories



Rexroth
Bosch Group

▲ ★ End plate, right



Material	Weight [kg] (lbs)	Port 1, 3, 5	Port R, X	Part no.
GD-AL	0.14 (0.309)	G3/8 - ISO 228/1	G1/8	8985121012
GD-AL	0.14 (0.309)	3/8-18 NPTF	NPTF 1/8 "	8985121312

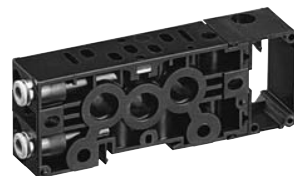
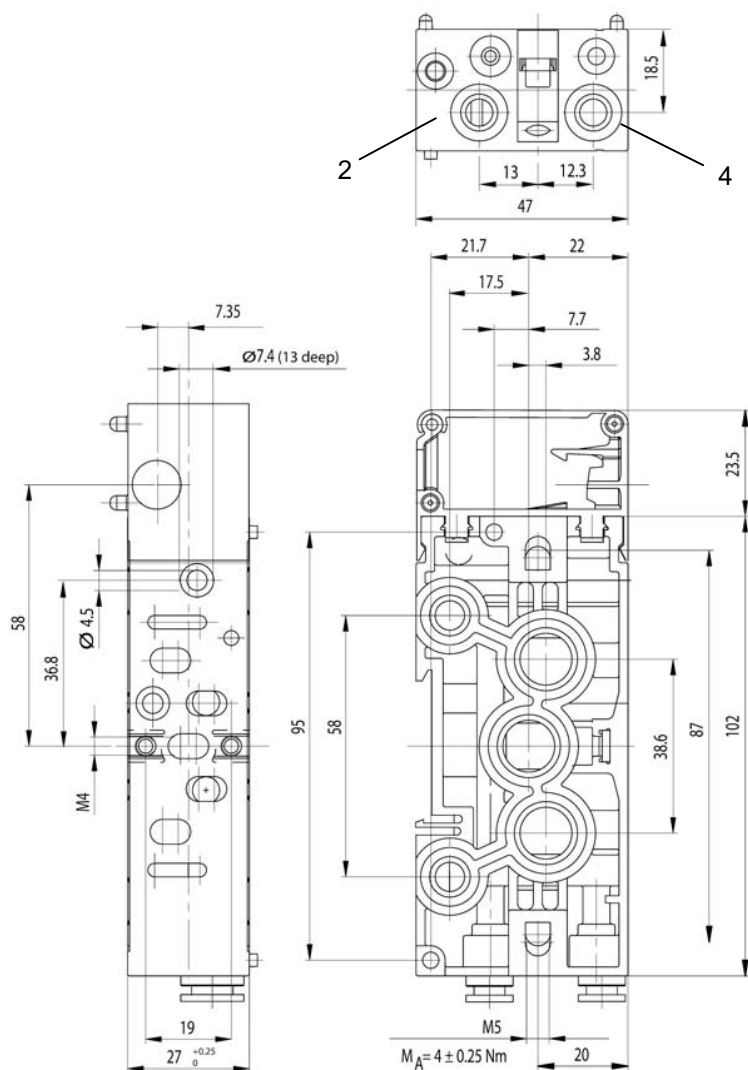
Connection 1: Pressure supply (exhaust at dual pressure operation), G3/8 or 3/8" NPTF
 Connection 3 and 5: Exhaust lines (pressure supply at dual pressure operation), G3/8 or 3/8" NPTF
 Connection X: External pilot air supply, G1/8 or 1/8" NPTF
 Connection R: Restricted pilot exhaust, G1/8 or 1/8" NPTF

Accessories



Rexroth
Bosch Group

▲ ★



Port 2 and 4	Material	Weight [kg] (lbs)	Part no.
4x0,75 (5/32 ")	PA, NBR	0.12 (0.265)	R412005876
6x1	PA, NBR	0.12 (0.265)	R412005875
8x1 (5/16 ")	PA, NBR	0.12 (0.265)	R412005874
G1/8	PA, NBR	0.12 (0.265)	R412005877

Solenoid valves, Series CD26-PL

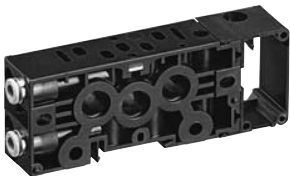
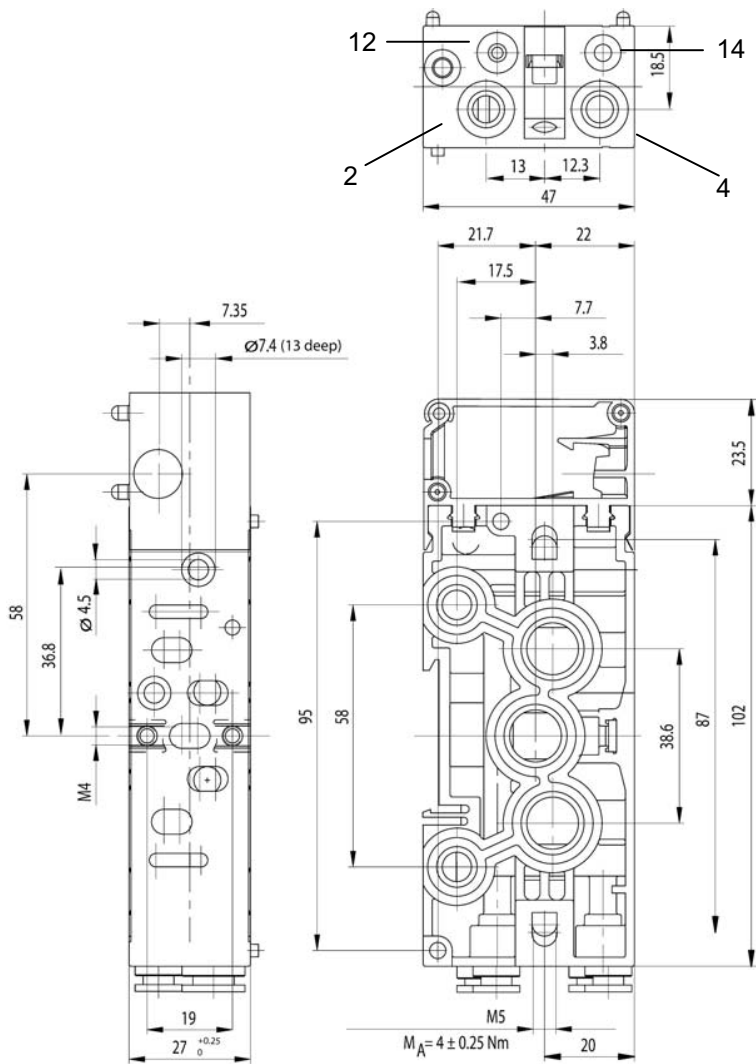
ISO 15407-2

Accessories



Rexroth
Bosch Group

▲ ★ Intermediate plate with cable conduit, connectors 2, 4, 12 and 14 side ported



Port 2 and 4	Port 12 and 14	Material	Weight [kg] (lbs)	Part no.
8x1 (5/16")	4x0.75 (5/32")	PA, NBR	0.12 (0.265)	R412005881

Solenoid valves, Series CD26-PL

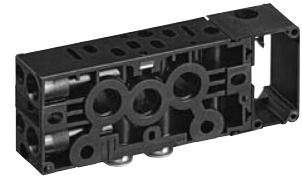
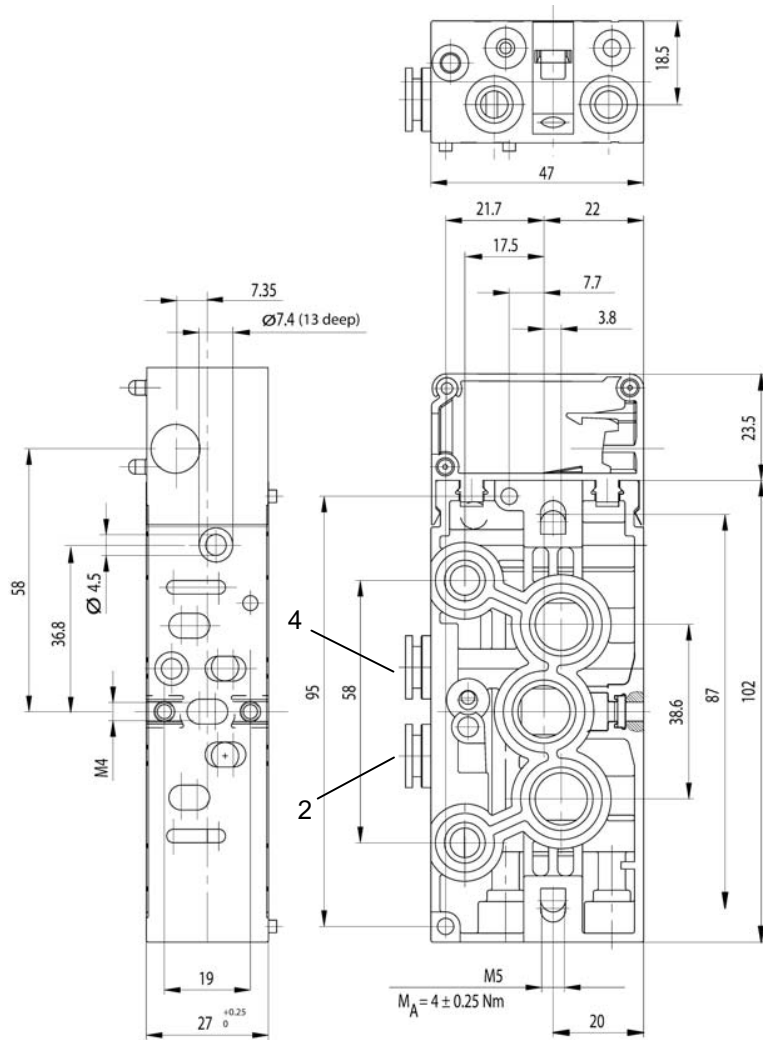
ISO 15407-2

Accessories



Rexroth
Bosch Group

▲ ★ Intermediate plate with cable conduit, ports 2 and 4 bottom ported



Port 2 and 4	Material	Weight [kg] (lbs)	Part no.
6x1	PA, NBR	0.12 (0.265)	R412005879
8x1 (5/16")	PA, NBR	0.12 (0.265)	R412005878
G1/8	PA, NBR	0.12 (0.265)	R412005880

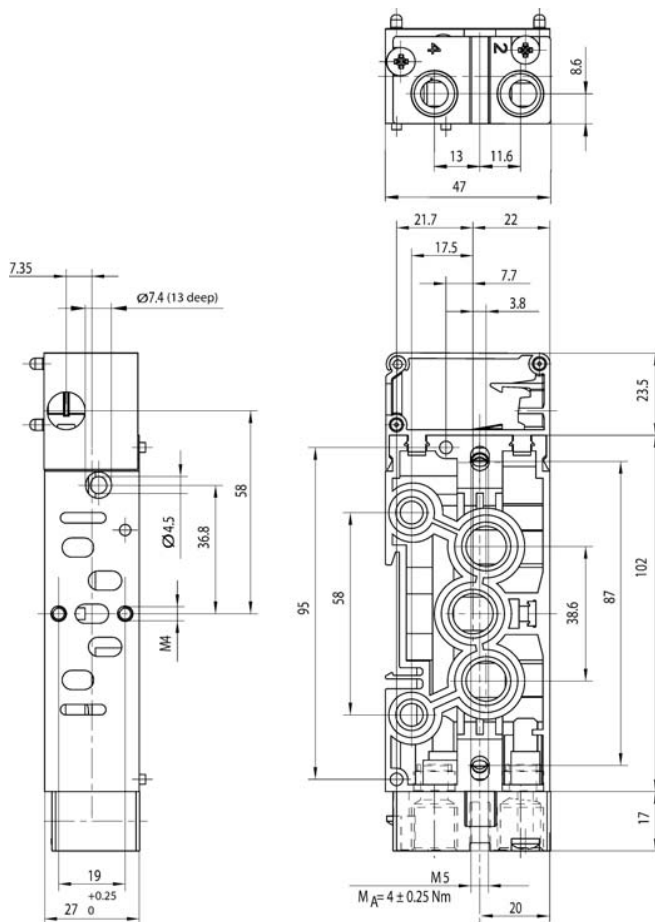
Solenoid valves, Series CD26-PL ISO 15407-2

Accessories



Rexroth
Bosch Group

▲ Intermediate plate with thread connection, connectors 2 and 4 side ported



Port 2 and 4	Material	Weight [kg] (lbs)	Part no.
G1/4 - ISO 228/1	Al, PA, NBR	0.12 (0.265)	R412005872
1/4 - 18 NPTF	Al, PA, NBR	0.12 (0.265)	R412005873

Solenoid valves, Series CD26-PL
ISO 15407-2

Accessories



Rexroth
Bosch Group

▲ Single subplate M12 with thread connection

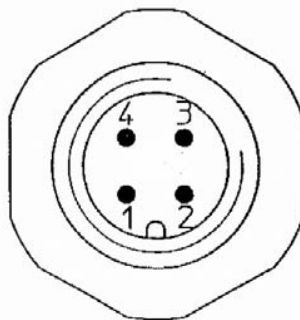
Technical Data

Type		Single subplate
Standard		ISO 15407-2, 26 mm
Working pressure	range/min./max.	0 bar / 10 bar (0 psi / 145 psi)
Ambient temperature	range/min./max.	–15 °C / +50 °C (+5 °F / +122 °F)
Pressure medium		Compressed air according to DIN ISO 8571-1, 2-3-2
Weight		0.340 kg (0.750 lbs.)
Materials		Al
Operating voltages		24 V DC ±10%
Current per contact	max.	1 A
Power supply		DIN EN 61558-1: 1997 DIN EN 61558-2-6: 1998
Degree of protection		IP65-IEC60529 (DIN VDE 0470-1) (NEMA 4)
Duty cycle	ED	100%



Type	Connection 1/3/5 and 2/4	Connections X/R	Part no.
Single subplate	G 1/4-ISO 228/1	G 1/8-ISO 228/1	R412005886
Single subplate	1/4-18 NPTF	1/8-27 NPTF	R412005887

Allocation scheme



4 Pin M12 Micro Male Connector

Pin

- 1 Not connected
- 2 Solenoid 12
- 3 0V (Solenoid 12 and 14)
- 4 Solenoid 14

Note: Voltage supply must be 24VDC

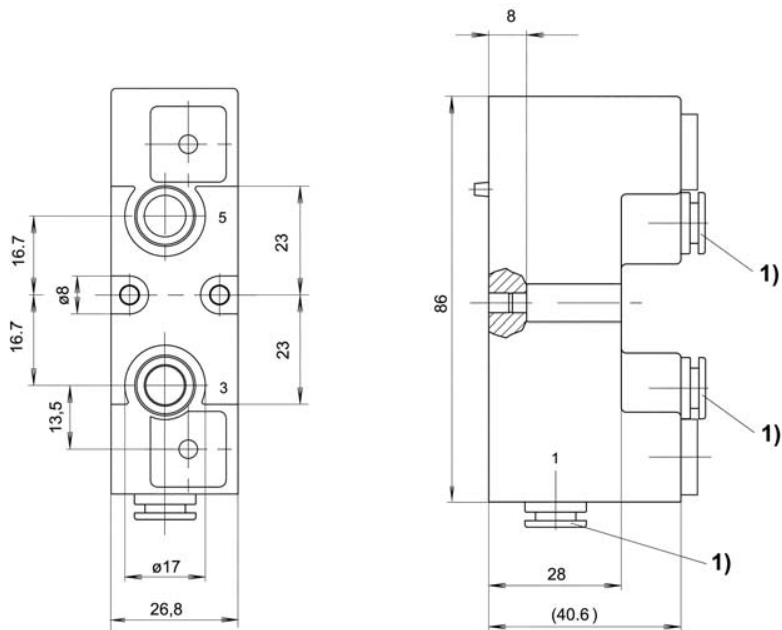
Solenoid valves, Series CD26-PL
ISO 15407-2

Accessories



Rexroth
Bosch Group

▲ ★ Module with 1, 3, 5 additional (instead of a valve) Supply /exhaust

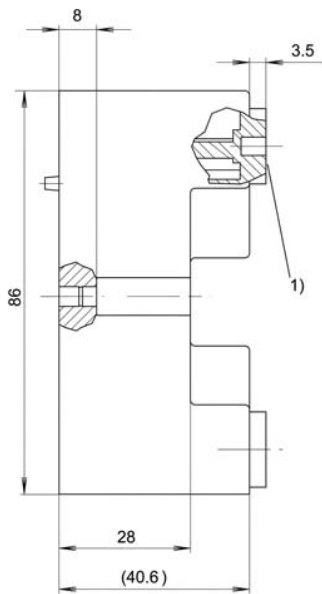
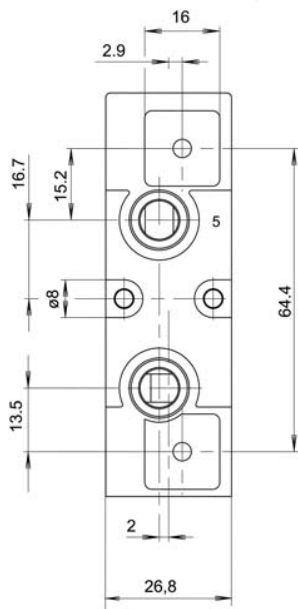


1) Port 1, 3 and 5: PUSH-IN fitting for plastic tube Ø 8x1 (3 plugs Ø 8 x 1 will be supplied)

Working pressure max. [bar] (psi)	Material	Weight [kg] (lbs)	Part no.
16 (232)	PA, NBR	0.100 (0.220)	8985121472



▲ ★ Blanking plate (instead of a valve)



1) with thread cartridge M 2,5

Material	Weight [kg] (lbs)	Part no.
PA, NBR	0.100 (0.220)	8985121492

Solenoid valves, Series CD26-PL
ISO 15407-2

Accessories



Rexroth
Bosch Group

★ Pilot control module (single) with LED, 24 V DC

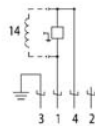
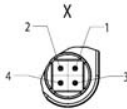
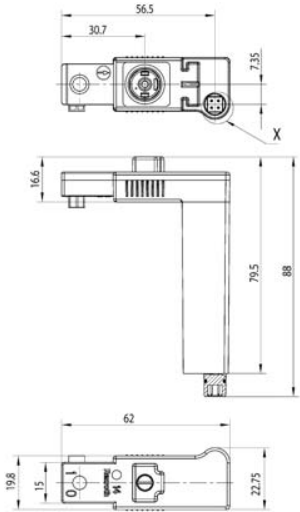
Technical Data

Status indication	LED yellow
Degree of protection	IP65-IE 60529 (DIN VDE 0470-1) (NEMA 4)
Ambient temperature range	min./max. -15 °C / +50 °C (+5 °F / +122 °F)
Protective circuit	Diode (43 V)
Torque of mounting screw	0.05 Nm (0.44 in.lbs.)



★ Part no.

Operating voltage	Material	Weight [kg] (lbs)	Part no.
24 V DC	PEI	0.020 (0.044)	R412005847



Pin allocation: 1) Solenoid 14 2) Solenoid 12 3) Ground 4) 0 V

Solenoid valves, Series CD26-PL
ISO 15407-2

Accessories



Rexroth
Bosch Group

★ Pilot control module (double) with LED, 24 V DC

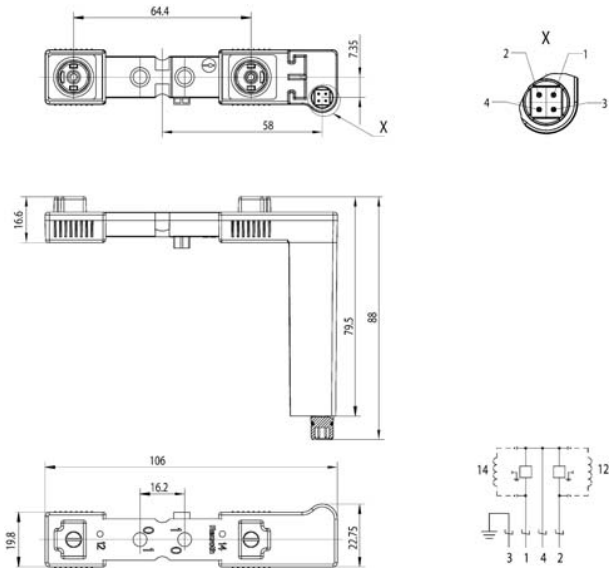
Technical Data

Status indication	LED yellow
Degree of protection	IP65-IE 60529 (DIN VDE 0470-1) (NEMA 4)
Ambient temperature range	min./max. -15 °C / +50 °C (+5 °F / +122 °F)
Protective circuit	Diode (43 V)
Torque of mounting screw	0.05 Nm (0.44 in.lbs.)



★ Part no.

Operating voltage	Material	Weight [kg] (lbs)	Part no.
24 V DC	PEI	0.030 (0.066)	R412005846



Pin allocation: 1) Solenoid 14 2) Solenoid 12 3) Ground 4) 0 V

Solenoid valves, Series CD26-PL

ISO 15407-2

Accessories



Rexroth
Bosch Group

★ Precision check-choke valve, ND 4, push-in fitting, Ø 8x1 mm

Technical Data

Type		Precision choke
Working pressure	p_{max}	10 bar (145 psi)
Nominal flow rate Q_n at 6 bar (87 psi), $\Delta p = 1$ bar (15 psi)	in choked direction	max. 680 l/min (0.68 Cv)
Ambient temperature range	in backflow direction	510 to 810 l/min* (0.51 to 0.81 Cv)
Medium	min./max.	0 °C / +50 °C (+32 °F / +122 °F)
Weight		Compressed air, lubricated or non-lubricated 0.045 kg (0.099 lbs)

Materials	Body	PA
	Seals	NBR

* depending on the adjustment of the throttle

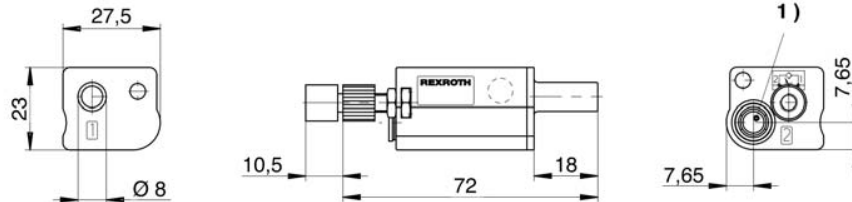
► Application area

For direct subplate mounting with push-in side fitting Ø 8 mm



► ★ Part no.

Symbol	Part no.
	5341300000



1) Push-in fitting Ø 8 x 1

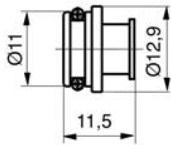
Solenoid valves, Series CD26-PL
ISO 15407-2

Accessories



Rexroth
Bosch Group

▲ Blocking plug (for 1, 3, 5 subplate channels)



Material	Part no.
Al, NBR	8985129002

Our expertise is your competitive advantage

Experience and expertise combined with world-class products. Working with Rexroth means working with a partner who can show you how to apply pneumatics for your competitive advantage.

Producing movement with air—that's pneumatics from Rexroth. We can show you how to do more with air—to achieve higher productivity, greater precision, and higher reliability. And with a complete portfolio of pneumatic, hydraulic, mechanical, electronic, and electro-pneumatic components and systems, Rexroth is your global source of industrial automation solutions.



Standard or custom

Providing a sophisticated and extensive standard product line in both NPT and ISO G (BSPP) port configurations, our products include pneumatic valves and actuators, pneumatic and hydraulic cylinders, pneumatic fieldbus valve manifolds, electro-pneumatic valves and positioners, FRLs, tubing and fittings, vacuum components, industrial shock absorbers, and tooth chain products.

We can also customize products to produce application-specific solutions. Our experience in materials, design and manufacturing, and machine knowledge gives us the flexibility to work with you to craft the exact solution you need.

Versatile, modular, precise

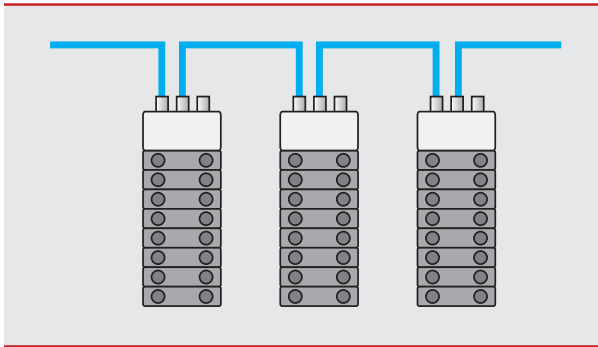
Our products are designed with market-specific needs in mind. You'll find what you need rather than trying to force-fit a close cousin. Or we'll give you the custom solution you need. Our modular approach means greater versatility and flexibility in application and customization. What's more, the modularity allows easier integration and greater cost savings.

Customer-based product development

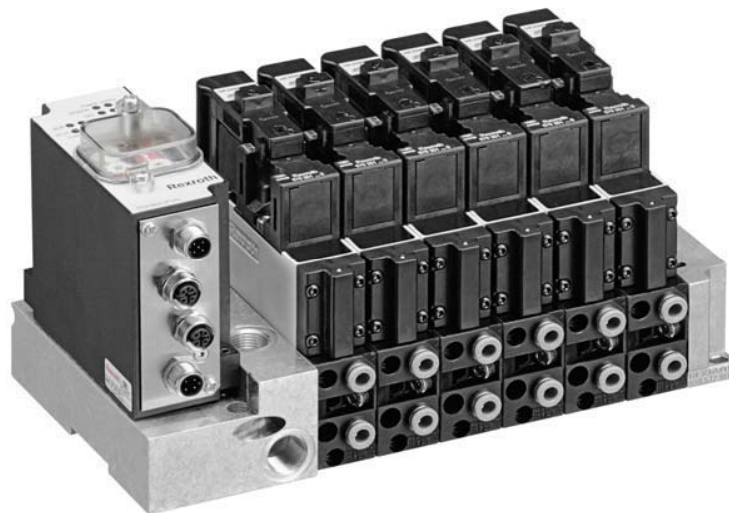
Our products have always been state-of-the-art technology. We are constantly developing new products and improving existing ones—while working with customers globally to understand evolving needs. By focusing our product development on your real-world needs, we create products that give you a competitive edge in reliability, capabilities, and easy use.

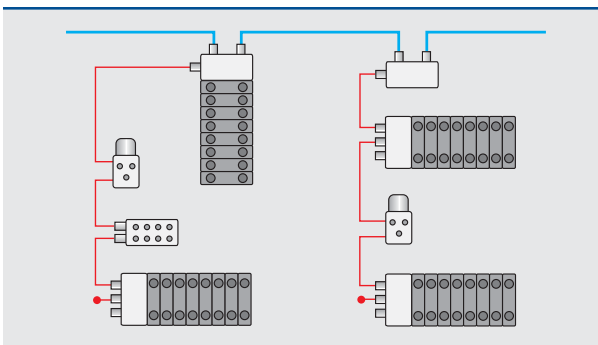
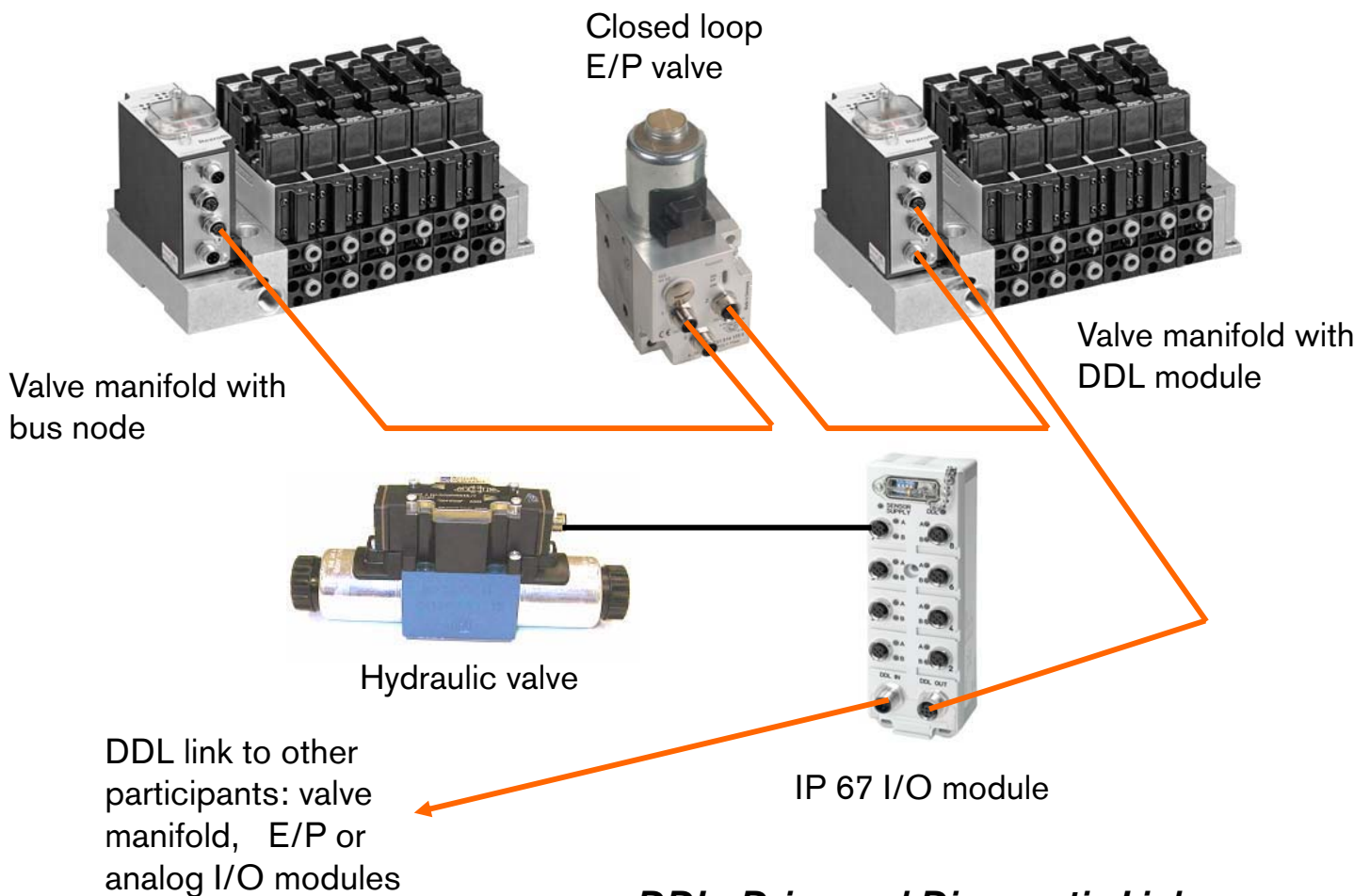
Worldwide presence

Global presence, global availability, global application—with Rexroth you have an international supplier who can support you worldwide. Five development centers—in Lexington, Kentucky; Hannover and Schwieberdingen, Germany; Stockholm, Sweden; and Bonneville, France—serve as centers of competence for advancing the state of the art in pneumatics in an ISO 9001-certified design and production environment.



- **BDC–Bus Direct Control**
- Connects directly to the field bus (one node per valve manifold)
- Standard protocols
 - DeviceNet
 - Profibus DP
 - AS-interface
 - CANopen
- Up to 24 valve solenoid coils per bus module (except AS-I)





- ***DDL–Drive and Diagnostic Link***
- Bus node controls 128 I/O regardless of protocol
- Standard protocols
 - DeviceNet
 - ControlNet
 - Profibus DP
 - Interbus-S
 - CANopen
 - Ethernet I/P
- 128 I/O decentralized across up to 14 participants
- Extensive diagnostic capability

Rexroth Plug-in Valves Overview

A Complete Range

Rexroth
Bosch Group



LP04
(Cv 0.3)
1/4"
Push-in



HF04
(Cv 0.4)
6mm
Push-in



HF03
(Cv 0.6)
1/8



HF02
(Cv 1.4)
1/4

CD26-PL
(Cv 1.0)
1/8 & 1/4



261 Size 1
(Cv 1.4)
1/4 & 3/8



261 Size 2
(Cv 2.7)
3/8 & 1/2



261 Size 3
(Cv 4.8)
1/2 & 3/4



NOTICES TO PRODUCT USERS

1. WARNING: FLUID MEDIA

Bosch Rexroth pneumatic devices are designed and tested for use with filtered, clean, dry, chemical free air at pressures and temperatures within the specified limits of the device. For use with media other than air or for human life support systems, Bosch Rexroth must be consulted. Hydraulic cylinders are designed for operation with filtered, clean, petroleum based hydraulic fluid; operation using fire-resistant or other special types of fluids may require special packing and seals. Consult the factory.

2. WARNING: MATERIAL COMPATIBILITY

Damage to product seals or other parts caused by the use of non-compatible lubricants, oil additives or synthetic lubricants in the air system compressor or line lubrication devices voids Bosch Rexroth's warranty and can result in product failure or other malfunction. See lubrication recommendations below.

AIR LINE LUBRICANTS! In service higher than 18 cycles per minute or with continuous flow of air through the device, an air line lubricator is recommended.* (Do not use line lubrication with vacuum products.) However, the lubricator must be maintained since the oil will wash out the grease, and lack of lubrication will greatly shorten the life expectancy. The oils used in the lubricator must be compatible with the elastomers in the device. The elastomers are normally BUNA-N, NEOPRENE, VITON, SILICONE and HYTREL. Bosch Rexroth recommends the use of only petroleum based oils without synthetic additives, and with an aniline point between 180° F and 210° F.

COMPRESSOR LUBRICANTS! All compressors (with the exception of special "oil free" units) pass oil mist or vapor from the internal crankcase lubricating system through to the compressed air. Since even small amounts of non-compatible lubricants can cause severe seal deterioration (which could result in component and system failure) special care should be taken in selecting compatible compressor lubricants. It is recommended that users review the National Fluid Power Association "Recommended Guide Lines For Use Of Synthetic Lubricants In Pneumatic Fluid Power Systems" (NFPA T1.9.2-1978).

3. WARNING: INSTALLATION AND MOUNTING

The user of these devices must conform to all applicable electrical, mechanical, piping and other codes in the installation, operation or repair of these devices.

INSTALLATION ! Do not attempt to install, operate or repair these

devices without proper training in the technique of working on pneumatic or hydraulic systems and devices, unless under trained supervision.

Compressed air and hydraulic systems contain high levels of stored energy. Do not attempt to connect, disconnect or repair these products when a system is under pressure. Always exhaust or drain the pressure from a system before performing any service work. Failure to do so can result in serious personal injury.

MOUNTING! Devices should be mounted and positioned in such a manner that they cannot be accidentally operated.

4. WARNING: APPLICATION AND USE OF PRODUCTS

The possibility does exist for any device or accessory to fail to operate properly through misuse, wear or malfunction. The user must consider these possibilities and should provide appropriate safe guards in the application or system design to prevent personal injury or property damage in the event of a malfunction.

5. WARNING: CONVERSION, MAINTENANCE AND REPAIR

When a device is disassembled for conversion to a different configuration, maintenance or repair, the device must be tested for leakage and proper operation after being reassembled and prior to installation.

MAINTENANCE AND REPAIR! Maintenance periods should be scheduled in accordance with frequency of use and working conditions. All Bosch Rexroth products should provide a minimum of 1,000,000 cycles of maintenance free service when used and lubricated as recommended. However, these products should be visually inspected for defects and given an "in system" operating performance and leakage test once a year. Where devices require a major repair as a result of the one million cycles, one year, or routine inspection, the device must be disassembled, cleaned, inspected, parts replaced as required, rebuilt and tested for leakage and proper operation prior to installation. See individual catalogs for specific cycle life estimates.

6. PRODUCT CHANGES

Product changes including specifications, features, designs and availability are subject to change at any time without notice. For critical dimensions or specifications, contact factory.

*Many Bosch Rexroth pneumatic valves and cylinders can operate with or without air line lubrication; see individual sales catalogs for details.

—Refer to the appropriate service catalog for parts and service information.

LIMITATIONS OF WARRANTIES & REMEDIES

Bosch Rexroth warrants its products sold by it to be free from defects in material and workmanship to the following:

For twelve months after shipment Bosch Rexroth will repair or replace (F.O.B. our works), at its option, any equipment which under normal conditions of use and service proves to be defective in material or workmanship at no charge to the purchaser. No charge will be made for labor with respect to defects covered by this Warranty, provided that the work is done by Bosch Rexroth or any of its authorized service facilities. However, this Warranty does not cover expenses incurred in the removal and reinstallation of any product, nor any downtime incurred, whether or not proved defective.

All repairs and replacement parts provided under this Warranty policy will assume the identity, for warranty purposes, of the part replaced, and the warranty on such replacement parts will expire when the warranty on the original part would have expired. Claims must be submitted within thirty days of the failure or be subject to rejection.

This Warranty is not transferable beyond the first using purchaser. Specifically, excluded from this Warranty are failures caused by misuse, neglect, abuse, improper operation or filtration, extreme temperatures, or unauthorized service or parts. This Warranty also excludes the use of lubricants, fluids or air line additives that are not compatible with seals or diaphragms used in the products. This Warranty sets out the purchaser's exclusive remedies with respect to products covered by it, whether for negligence or otherwise. Neither Bosch Rexroth nor any of its affiliates will be liable for consequential or incidental damages or other losses or expenses incurred by reason of the use or sale of such products. Our liability (except as to title) arising out of the sale, use or operation of any product or parts, whether on warranty, contract or negligence (including claims for consequential or incidental damage) shall not in any event exceed the cost of replacing the defective products and, upon expiration of the warranted period as herein provided, all such liability is terminated. THIS WARRANTY IS IN LIEU OF ALL OTHER WARRANTIES, EXPRESS OR IMPLIED, WHETHER FOR MERCHANTABILITY OR FITNESS FOR A PARTICULAR PURPOSE OR OTHERWISE. No attempt to alter, amend or extend this Warranty shall be effective unless authorized in writing by an officer of Bosch Rexroth Division.

Bosch Rexroth reserves the right to discontinue manufacture of any product, or change product materials, design or specifications without notice.

This is a Year 2000 Readiness disclosure as defined and used in the Year 2000 Information and Readiness Disclosure Act:

Notwithstanding any provision to the contrary, Seller acknowledges the potential Year 2000 problem and hereby promises to use its good faith, best efforts to attempt to be Year 2000 Compliant as soon as practicable. "Year 2000 Compliant" means that Seller's goods and services will be designed to be used prior to, during, and after calendar year 2000 A.D., and to operate during each such time period without substantive error relating to date data, specifically including any substantive error relating to, or the product of, date data which represents or references different centuries or more than one century, and will recognize the calendar year 2000 A.D. as a leap year.

Bosch Rexroth Corporation
Pneumatics
1953 Mercer Road
Lexington, KY 40511-1021
Telephone (859) 254-8031
Facsimile (859) 254-4188
www.boschrexroth-us.com

International offices:

Asia:

China	Russia
India	Singapore
Japan	South Korea
Malaysia	

Australia

Europe:

Austria	Netherlands
Belgium	Norway
Bulgaria	Poland
Czech Republic	Portugal
Denmark	Romania
Finland	Slovakia
France	Spain
Germany	Sweden
Greece	Switzerland
Hungary	Turkey
Italy	Ukraine
	United Kingdom

North America:

Canada	United States
Mexico	

South America:

Argentina	Venezuela
Brazil	

Factory Automation

Regional sales offices:

Central

Bosch Rexroth Corporation
5150 Prairie Stone Parkway
Hoffman Estates, IL 60192-3707
Telephone (847) 645-3600
Facsimile (847) 645-0804

Great Lakes

Bosch Rexroth Corporation
1701 Harmon Road
Auburn Hills, MI 48326-1549
Telephone (248) 393-3330
Facsimile (248) 393-2893

Northeast

Bosch Rexroth Corporation
99 Rainbow Road
East Grandby, CT 06026-0000
Telephone (860) 844-8377
Facsimile (860) 844-8595

Bosch Rexroth Corporation
2315 City Line Road
Bethlehem, PA 18017-2131
Telephone (610) 694-8300
Facsimile (610) 694-8467

Southeast

Bosch Rexroth Corporation
14001 South Lake Drive
Charlotte, NC 28273-5544
Telephone (704) 583-4338
Facsimile (704) 583-0523

West

Bosch Rexroth Corporation
11 Goddard
Irvine, CA 92618-4600
Telephone (949) 450-2777
Facsimile (949) 450-2790

North American offices:

Bosch Rexroth Corporation
Corporate Headquarters
5150 Prairie Stone Parkway
Hoffman Estates, IL 60192-3707
Telephone (847) 645-3600
Facsimile (847) 645-0804

Bosch Rexroth Corporation
Industrial Hydraulics
2315 City Line Road
Bethlehem, PA 18017-2131
Telephone (610) 694-8300
Facsimile (610) 694-8467

Bosch Rexroth Corporation
Electric Drives and Controls
5150 Prairie Stone Parkway
Hoffman Estates, IL 60192-3707
Telephone (847) 645-3600
Facsimile (847) 645-6201

Bosch Rexroth Corporation
Linear Motion and
Assembly Technologies
816 E. Third Street
Buchanan, MI 49107
Telephone (269) 695-0151
Facsimile (269) 695-5363

14001 South Lakes Drive
Charlotte, NC 28273
Telephone (800) 438-5983
Facsimile (704) 583-0523

Bosch Rexroth Corporation
Mobile Hydraulics
145 Southchase Boulevard
Fountain Inn, SC 29644-9018
Telephone (864) 967-2777
Facsimile (864) 962-5338

Bosch Rexroth Canada
3426 Mainway Drive
Burlington, Ontario L7M 1A8
Telephone (905) 335-5511
Facsimile (905) 335-4184
www.boschrexroth.ca

Bosch Rexroth, S.A. de C.V.
Calle Neptuno # 72
Unidad Industrial Vallejo
CP 07700 Mexico, D.F.
Telephone (555) 754-1711
Facsimile (555) 752-5943